

## Specification Sheet

# **SL815HF-2**

Fouling Resistance Type of Polyamide Reverse Osmosis Membrane Element

### ■ Application

- Production wastewater treatment, reclaimed water recycle, sewage wastewater treatment etc.
- Industrial applications for power, steel, electroplating, petrochemical, coal to chemicals, textile and dyeing, pulp&Papermaking, landfill leachate etc.
- Feed TDS below 8,000 mg/L

### ■ Specification

<b>Membrane Surface Area(Nominal)</b>	<b>37.2 m<sup>2</sup> (400 ft<sup>2</sup>)</b>	
<b>Feed spacer thickness</b>	<b>34 mil</b>	
<b>Permeate flow</b>	<b>43.5 m<sup>3</sup>/d (11,500 GPD)</b>	<b>*1, *2</b>
<b>Nominal Salt Rejection</b>	<b>99.75%</b>	<b>*1</b>
<b>Minimum Salt Rejection</b>	<b>99.65%</b>	<b>*1</b>

(\*1) Test condition : Feed Pressure 1.55 MPa (225 psi), Temperature 25 deg. C,

Feed water concentration 2,000 mg/L as NaCl, Recovery ratio 15%, Feed water pH 7.5 - 8.0

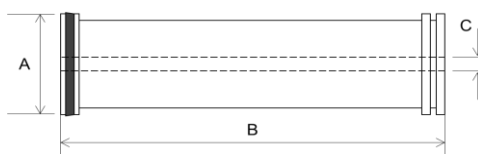
(\*2) Individual permeate flow rate may vary +/- 15%

### ■ Operating limits

<b>Maximum Pressure</b>	<b>4.14 MPa (600 psi)</b>
<b>Maximum Temperature</b>	<b>45 °C</b>
<b>Maximum Feed water SDI<sub>15</sub></b>	<b>5</b>
<b>Maximum Feed water flow</b>	<b>17 m<sup>3</sup>/hr</b>
<b>pH range during operation</b>	<b>3 - 10</b>
<b>Free chlorine of feed water</b>	<b>Not detectable</b>
<b>Maximum element pressure drop</b>	<b>0.1 MPa (15 psi)</b>

### ■ Element Dimension

<b>A</b>	<b>Outer diameter</b>	<b>200 mm (7.9 inch)</b>
<b>B</b>	<b>Length</b>	<b>1,016 mm (40 inch)</b>
<b>C</b>	<b>Diameter of permeate tube</b>	<b>28.6 mm (1.125 inch)</b>



All the information is understood to be subject to change without prior announcement.  
For more detail, refer to the manual and/or contact us.

### TOYOBO MC Corp.

Water Treatment Membrane Sales Unit

Phone: +81-6-6348-3360

E-mail: Membrane@toyobo-mc.jp